

Protecting Our Seas

Supporting fisheries management in Welsh MPAs

The **PROTECTING OUR SEAS** Project, through the **Welsh Fishermen's Association - Cymdeithas Pysgotwyr Cymru**, with funding by the **European Maritime and Fisheries Fund** and match funded by **Welsh Government**, has been carried out by **ENVISION** and associates and is part of ongoing work by the **Welsh Government** and **Natural Resources Wales**



Supporting fisheries management in Welsh MPAs

In 2020-21 seabed surveys were carried out by ENVISION for the Welsh Fishermen's Association - Cymdeithas Pysgotwyr Cymru (WFA-CPC) in two Welsh Special Areas of Conservation (SACs), where interaction between mobile fishing gear and conservation features have been highlighted as a potential issue.

The study supported ongoing work by the Welsh Government and Natural Resources Wales to evaluate interactions between fishing activities and features of Welsh Marine Protected Areas (MPAs).

Surveys were completed in the Severn Estuary/Môr Hafren SAC to explore the location of *Sabellaria alveolata* reefs and in Cardigan Bay/Bae Ceredigion SAC to establish the extent and 'reefiness' of cobble/boulder habitats.

Supporting fisheries management in Welsh MPAs

The Welsh Government (WG), in partnership with Natural Resource Wales (NRW) is evaluating interactions between fishing activities and features of Welsh Marine Protected Areas (MPAs) under the Assessing Welsh Fishing Activities (AWFA) Project¹.

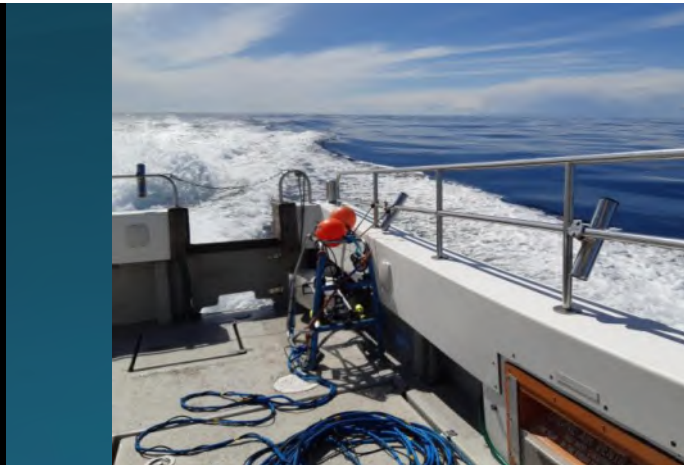
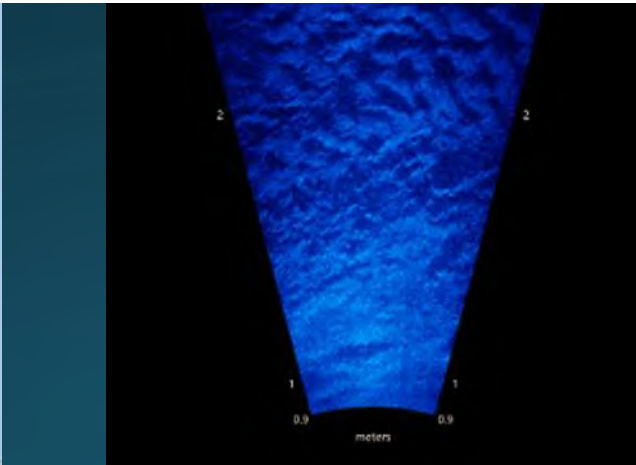
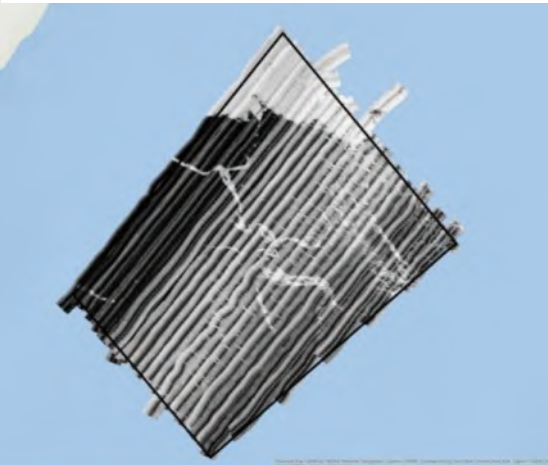
With guidance from WG/NRW, this study set out to explore the extent of marine features for which high risk interactions with mobile fishing gears have been identified within two Welsh SACs.

The results have successfully added to the growing evidence base required to prioritise and support Welsh Government management options for fisheries in these areas.

¹<https://naturalresources.wales/about-us/our-projects/marine-projects/assessing-welsh-fishing-activities/>

Supporting fisheries management in Welsh MPAs

Using existing data and information from local fishers, the surveys also employed a variety of different techniques on the sites at different scales to produce maps and information to better inform and prioritise Welsh Government management decisions.

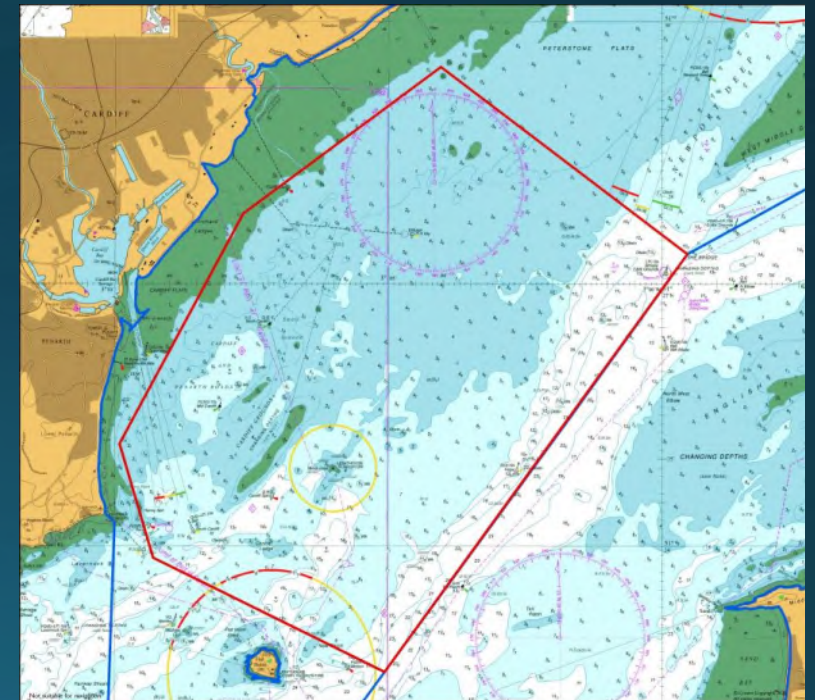


Sabellaria in the Severn Estuary | Môr Hafren SAC

The first study phase produced seabed imagery for the Severn Estuary near Cardiff, to better understand the extent and distribution of Sabellaria reef in relation to current mobile fishing activity.

Through fisher consultation, the spatial extent of mobile gear activity was confirmed. Benthic and geophysical surveys were then carried out in areas where both this fishing activity occurs and where Sabellaria has previously been recorded. The resulting bathymetry, sidescan sonar, AGDS and acoustic imagery data were reviewed to identify potential features or areas of variable ground, shown as red boxes in the adjacent figure.

Much of the areas surveyed were relatively featureless, comprised of coarse or softer sediments with sand waves and ripples. Areas of more variable seabed, or 'rough' ground, were not identifiable as Sabellaria colonies or characteristic reef features.



Wider survey area within the SAC

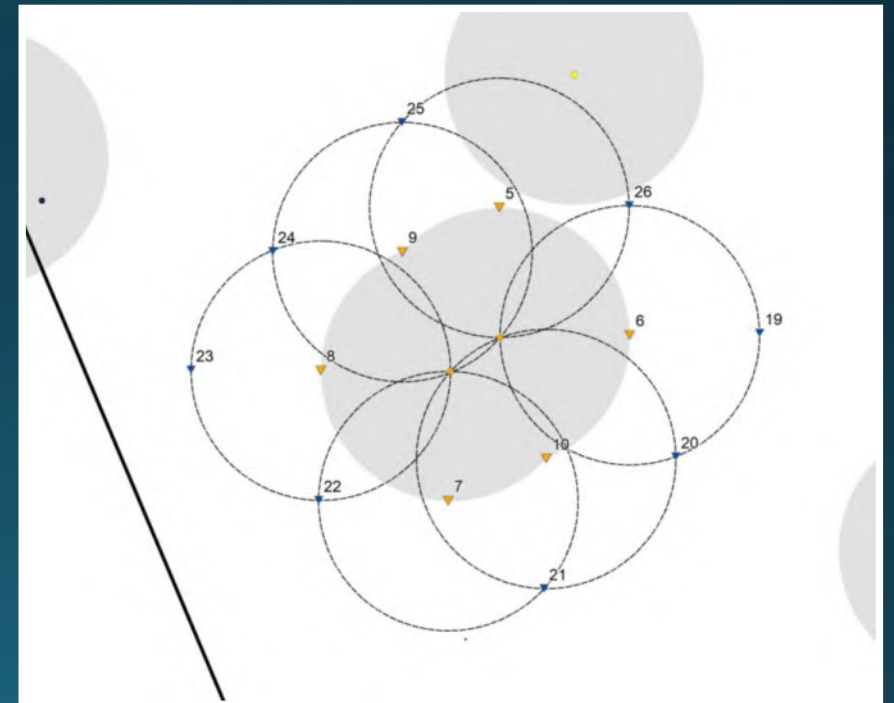
Cobble and boulder 'reefiness' in Cardigan Bay | Bae Ceredigion SAC

Management options within Cardigan Bay/Bae Ceredigion SAC are considered regularly by WG and understanding the status of conservation features which may be affected by mobile fishing gears is necessary for assessment.

Surveys were undertaken using underwater camera systems adjacent to an area which is seasonally closed to scallop fishing, to establish the extent of 'medium' quality Annex I cobble/boulder reef at previously reported locations.

The distribution of Annex 1 features and habitats recorded were plotted with GIS. The majority of habitats observed at sample stations were sedimentary with some infauna apparent, often interspersed with patchy cobbles and boulders.

Several areas showed 'Low' resemblance to Annex 1 stony reef, but were very patchy in distribution. Evidence suggested that it is not possible to define extents of areas with 'medium' resemblance to Annex 1 stony reef within the areas surveyed.



Sample plan design for surveys

Protecting Our Seas

PROTECTING OUR SEAS

Supporting fisheries management in Welsh MPAs

In 2020-21 seabed surveys were carried out by ENVISION for the Welsh Fishermen's Association - Cymdeithas Pysgotwyr Cymru (WFA-CPC) in two Welsh Special Areas of Conservation (SACs), where interaction between mobile fishing gear and conservation features have been highlighted as a potential issue.

The study supported ongoing work by the Welsh Government and Natural Resources Wales to evaluate interactions between fishing activities and features of Welsh Marine Protected Areas (MPAs).

Surveys were completed in the Severn Estuary/Môr Hafren SAC to explore the location of Sabellaria alveolata reefs and in Cardigan Bay/Boe Ceredigion SAC to establish the extent and 'reefiness' of cobble/boulder habitats.

The results have successfully added to the growing evidence base required to prioritise and support Welsh Government management options for fisheries in these areas.

What was done and why?

The Welsh Government (WGC), in partnership with Natural Resources Wales (NRW) is evaluating interactions between fishing activities and features of Welsh Marine Protected Areas (MPAs) under the Assessing Welsh Fishing Activities (AWFA) Project. With guidance from WGA/RW, this study set out to explore the extent of marine features for which high risk interactions with mobile fishing gear have been identified within two Welsh SACs.


The PROTECTING OUR SEAS Project, through the Welsh Fishermen's Association - Cymdeithas Pysgotwyr Cymru, with funding by the European Maritime and Fisheries Fund and match funded by Welsh Government, has been carried out by ENVISION and associates and is part of ongoing work by the Welsh Government and Natural Resources Wales.



Phone: 07376 044936 | Email: office@wfa-cpc.co.uk | wfa-cpc.wales

THE STUDY SITES

SEVERN ESTUARY | MÔR HAFREN SAC | CARDIGAN BAY | BOE CEREDIGION SAC



Using existing data and information from local fishers, the surveys also employed a variety of different techniques on the sites at different scales to produce maps and information to better inform and prioritise Welsh Government management decisions.

Sabellaria in the Severn Estuary | Môr Hafren SAC

The first study phase produced several images for the Severn Estuary near Cardiff, to better understand the extent and distribution of Sabellaria reef in relation to current mobile fishing activity.

Through fisher consultation, the spatial extent of mobile gear activity was confirmed. Seismic and geophysical surveys were then carried out in areas where both this fishing activity occurs and where Sabellaria has previously been recorded. The resulting bathymetry, sidescan sonar, AGES and acoustic imagery data were reviewed to identify potential features or areas of variable ground, shown as red lines in the adjacent figure.

Much of the area surveyed were relatively featureless, comprised of coarse or siltier sediments with sand waves and ripple. Areas of more variable seabed, or 'rough' ground, were not identifiable as Sabellaria colonies or characteristic reef features.

Cobble and boulder reefiness in Cardigan Bay | Boe Ceredigion SAC


Management options within Cardigan Bay/Boe Ceredigion SAC are considered regularly by NRW and understanding the status of conservation features which may be affected by mobile fishing gear is necessary for assessment.

Surveys were undertaken using underwater camera systems adjacent to an area which is occasionally closed to turbot fishing, to establish the extent of 'reefiness' quality Areas 1 cobble/boulder reef at previously reported locations.

The distribution of Areas 1 features and habitats recorded were plotted with GIS. The majority of habitats observed at sample stations were unremarkable with some infrequent, often discontinuous, with sparse cobbles and boulders.

Several areas showed 'low' reefiness to Areas 1 stony reef, but were very patchy in distribution. Evidence suggested that it is not possible to define extents of areas with 'medium' reefiness to Areas 1 stony reef within the areas surveyed.

For full reports, more information and questions please contact WFA-CPC
Phone: 07376 044936 | Email: office@wfa-cpc.co.uk | wfa-cpc.wales



@Welsh_Fishermen @WelshFishermensAssociation

For full reports, more information and questions please contact WFA-CPC
Phone: 07376 044936 | Email: @wfa-cpc.co.uk | wfa-cpc.wales



@Welsh_Fishermen



@WelshFishermensAssociation

The **PROTECTING OUR SEAS** Project, through the **Welsh Fishermen's Association - Cymdeithas Pysgotwyr Cymru**, with funding by the **European Maritime and Fisheries Fund** and match funded by **Welsh Government**, has been carried out by **ENVISION** and associates and is part of ongoing work by the **Welsh Government** and **Natural Resources Wales**

