



ENVISION MAPPING

COMPANY PROFILE

Envision Mapping Ltd. is an international environmental consultancy and research company based in the UK specialising in coastal and marine mapping, technical and data services.

Envision was formed in 2001 as a spinout from the University of Newcastle-upon-Tyne in response to growing demand for the skills acquired through research to provide an integrated range of services to support coastal and marine management and sustainability.



We believe in adding value to the projects we undertake, making best use of our diverse skills and depth of experience to develop the most appropriate products and advice. Our high numbers of return customers know that they can depend on Envision for a thoughtful and comprehensive approach to addressing marine and coastal matters in an efficient, responsive and professional manner.

OUR APPROACH

- professional - to meet the high standards that are expected from clients, industry bodies and charterships.
- flexible, responsive and practical - to give high quality solutions tailored to meet specific needs.
- rigorous - to ensure working standards and quality control measures that adhere to international standards.
- cross-disciplinary - to address the different physical, social, cultural and institutional needs of coastal areas.

Envision has worked with a wide variety of clients around the world: UK customers include Natural England, the Environment Agency, Department for Environment, Food and Rural Affairs (DEFRA), local government administrations, sea fisheries committees and local groups; International clients include the United Nations, European Union, World Bank, Department for International Development (DFID), foreign governments, donor agencies and a range of companies such as BP, Haskoning UK and Atkins.



Envision Mapping Ltd.
6 Stephenson House
Horsley Business Centre
Horsley, Northumberland
NE15 0NY, United Kingdom

T: +44 (0)1661 854 250
F: +44 (0)1661 854 361
E: mail@envision.uk.com
W: www.envision.uk.com



ENVISION MAPPING

ENVISION PROVIDES THE FOLLOWING SERVICES

Mapping and Surveys – well-equipped with a broad range of equipment to undertake marine acoustic mapping survey, as well as underwater video surveys and other sampling methods, and the expertise to analyse and interpret survey data collected by ourselves or others to produce high-quality maps and outputs.

Marine Planning – strategic marine planning, incorporating marine policy advice, environmental advice and assessment and stakeholder liaison. Used in conjunction with decision support tools this enables a multi-criteria approach with justifiable and transparent methods to help provide an evidence base for marine planning.

Technical and Data Services - marine, spatial– and non-spatial data sets can be checked & analysed to ensure quality, and processed to allow complex information to be easily interpreted and understood, through GIS, maps, and modelling.

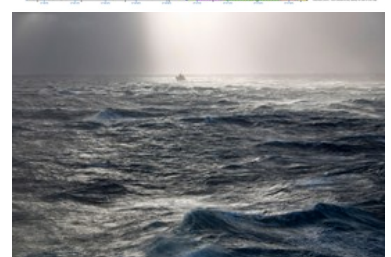
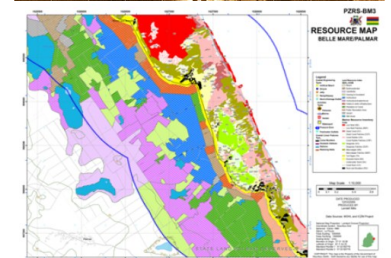
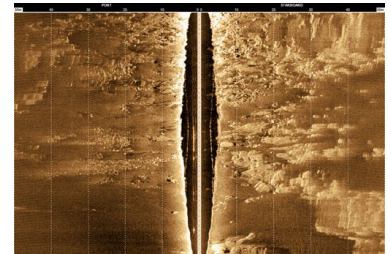
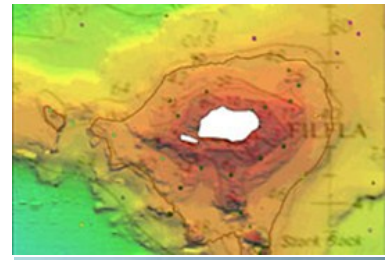
Specialist Advice - broad experience in commercial, research and collaborative project work gives the ability to provide strategic advice on all aspects of project and quality management, environmental assessment, data interpretation and presentation, and technical expertise in marine survey techniques.

Marine and Coastal GIS – a full capability in Geographical Information Systems (GIS) allows specialist analysis to be carried out and complex combinations of physical, biological and socio-economic information to be presented through easily understandable maps and illustrations for management needs.

Decision Support – specialist solutions to enable decision-makers to use the ever-increasing availability of information to make more effective and informed decisions in a justifiable and transparent way, and to facilitate stakeholder participation in the decision making process.

Environmental Assessment – skills and experience in environmental surveys, marine planning, decision support tools and data interpretation and presentation allows full facilitation of the Environmental Assessment process for developments from marine installations to coastal reclamation projects.

Fisheries Management Support – guidance on methods for assessing the effects of fishing, such as habitat mapping and spatial planning, to highlight seabed sensitivity to fishing activities, and potential conflicts between fisheries, for groups such as IFCA's and other statutory bodies.



Envision Mapping Ltd.
6 Stephenson House
Horsley Business Centre
Horsley, Northumberland
NE15 0NY, United Kingdom

T: +44 (0)1661 854 250
F: +44 (0)1661 854 361
E: mail@envision.uk.com
W: www.envision.uk.com